

YEAR 2020

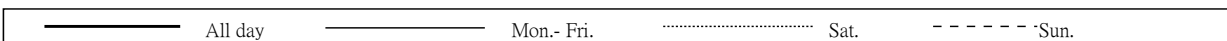
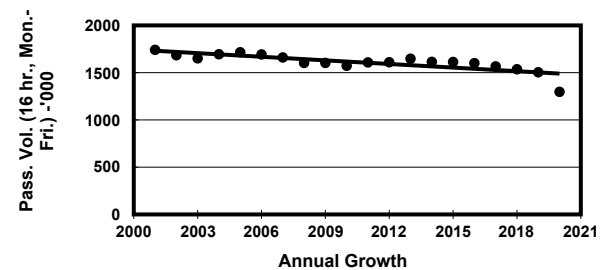
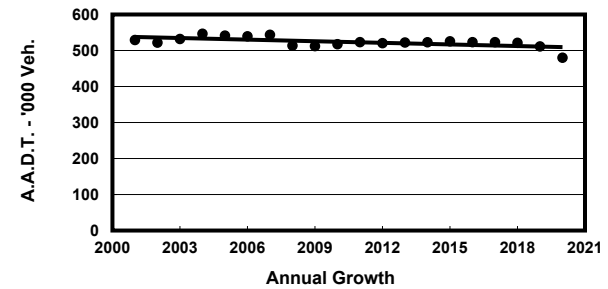
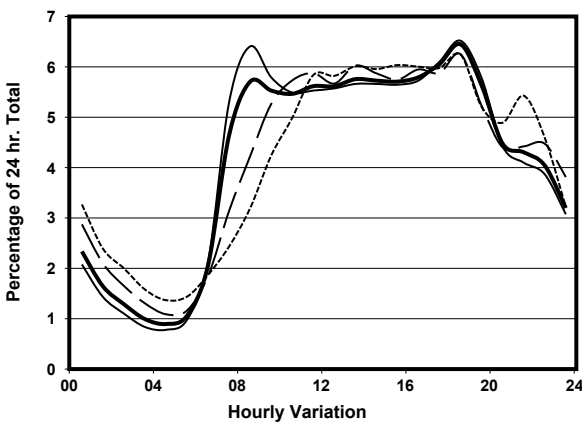
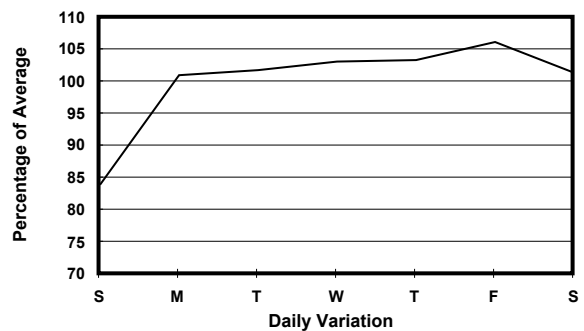
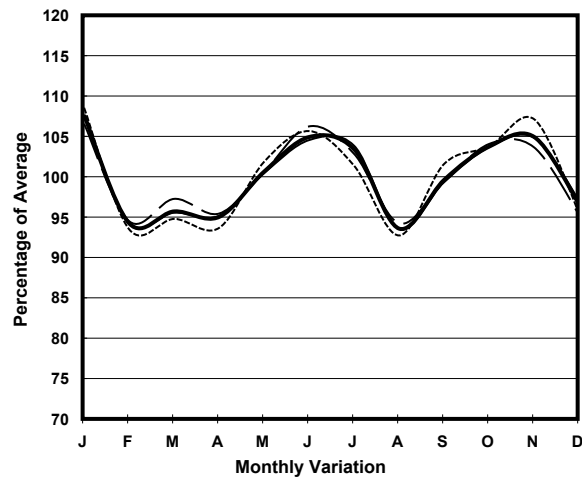
Location

Screenline A-A(Urban Railway Line)

Stations on Cordon/Screenline

3001, 3002, 4202, 4203, 4204, 4205, 4206, 4207, 4208, 4221 and 4401

## 1. TRAFFIC FLOW VARIATION AND GROWTH



## 2. TRAFFIC CHARACTERISTICS (BY DIRECTION)

Parameter	All - Day	Mon. - Fri.	Sat.	Sun.
<b>EAST BOUND</b>				
A.A.D.T.	250220	260300	254830	210190
R 12 / 24 - %	67.5	68.9	65	61.8
R 16 / 24 - %	86.6	87.7	84.1	82.6
AM Peak Hour	0800-0900	0800-0900	0900-1000	0900-1000
One-way flow at AM peak hour	14230	16810	12210	8140
T - % (AM)	-	8.9	-	-
PM Peak Hour	1800-1900	1800-1900	1600-1700	1600-1700
One-way flow at PM peak hour	16250	17170	15890	13310
T - % (PM)	-	6.3	-	-
Prop.of commercial vehicles - 16 hr.	-	7.6	-	-
<b>WEST BOUND</b>				
A.A.D.T.	229740	238060	235510	196160
R 12 / 24 - %	68.7	70	66.3	63.8
R 16 / 24 - %	86.5	87.5	84.2	83.2
AM Peak Hour	0800-0900	0800-0900	0900-1000	0900-1000
One-way flow at AM peak hour	13170	15130	13610	9100
T - % (AM)	-	6.5	-	-
PM Peak Hour	1800-1900	1800-1900	1800-1900	1800-1900
One-way flow at PM peak hour	14700	15310	15080	12100
T - % (PM)	-	5	-	-
Prop.of commercial vehicles - 16 hr.	-	6.8	-	-

## 3. OTHER INFORMATION AND COMMENT

#### 4. Vehicle classification and occupancy - Monday to Friday

Time		Class of vehicle									
		Motor Cycle	Private Car	Taxi	Private LB	PLB	Goods veh.		Non Fr. Bus	Fr. Bus	
							Light	M & H		SD	DD
0700-0800	Pro	5.9	41.1	19.7	3.3	4.0	15.0	4.0	3.1	0.1	3.9
	Ocp	1.1	1.4	2.0	7.2	11.4	1.4	1.2	13.8	16.2	43.4
0800-0900	Pro	4.4	52.5	17.9	1.1	2.7	13.8	2.6	1.5	0.1	3.4
	Ocp	1.0	1.3	2.0	3.9	13.1	1.5	1.3	18.6	15.1	45.6
0900-1000	Pro	3.5	45.4	19.8	0.8	2.5	19.5	3.6	1.2	0.1	3.6
	Ocp	1.1	1.3	1.9	2.1	10.5	1.5	1.3	3.0	12.6	28.0
1000-1100	Pro	3.1	39.1	22.8	0.9	2.1	23.4	4.6	0.6	0.1	3.4
	Ocp	1.0	1.4	1.8	1.9	8.8	1.4	1.3	4.2	12.2	25.9
1100-1200	Pro	3.5	39.9	22.0	1.4	2.5	23.0	3.9	1.0	0.1	2.9
	Ocp	1.1	1.4	1.8	2.3	7.9	1.5	1.3	2.9	12.1	28.6
1200-1300	Pro	3.5	45.4	21.2	1.7	2.1	18.3	3.5	1.4	0.1	2.8
	Ocp	1.0	1.4	1.8	3.9	9.8	1.5	1.4	8.6	15.0	28.3
1300-1400	Pro	3.6	43.5	21.0	2.3	2.0	19.8	3.8	1.3	0.1	2.6
	Ocp	1.0	1.4	2.0	5.8	11.0	1.4	1.2	8.1	23.6	36.4
1400-1500	Pro	3.2	44.6	19.6	1.2	2.2	21.5	3.8	1.2	0.1	2.6
	Ocp	1.1	1.4	1.9	2.4	9.9	1.5	1.4	2.6	14.3	31.4
1500-1600	Pro	3.8	44.6	20.6	1.2	2.2	21.0	3.2	0.4	0.1	2.9
	Ocp	1.1	1.4	1.9	2.9	10.2	1.5	1.3	5.2	14.6	31.2
1600-1700	Pro	4.3	46.8	20.3	1.2	2.3	18.7	2.5	0.9	0.1	3.0
	Ocp	1.1	1.4	1.8	3.1	10.5	1.5	1.3	2.6	14.1	33.9
1700-1800	Pro	5.9	51.0	18.3	0.8	2.4	15.5	2.1	0.7	0.1	3.2
	Ocp	1.1	1.4	1.9	2.6	13.6	1.5	1.3	6.4	17.7	44.5
1800-1900 Peak Hour	Pro	5.9	58.9	17.2	0.2	2.9	9.4	1.3	0.9	0.1	3.2
	Ocp	1.1	1.4	1.9	2.6	14.7	1.4	1.3	19.5	20.9	54.3
1900-2000	Pro	4.6	60.6	19.9	0.2	2.9	6.9	1.0	0.7	0.1	3.3
	Ocp	1.1	1.4	1.9	1.9	12.8	1.4	1.3	13.1	14.1	41.2
2000-2100	Pro	4.5	53.2	26.8	0.2	3.3	6.9	0.9	0.5	0.1	3.7
	Ocp	1.1	1.4	1.9	1.2	11.0	1.4	1.3	7.7	9.7	28.6
2100-2200	Pro	5.3	48.2	31.2	0.3	3.3	6.2	0.9	0.5	0.1	3.9
	Ocp	1.1	1.4	1.9	1.7	10.3	1.4	1.4	3.6	8.1	28.3
2200-2300	Pro	4.1	49.4	32.2	0.1	3.3	5.4	0.9	0.3	0.1	4.2
	Ocp	1.2	1.4	1.9	1.5	8.5	1.3	1.2	1.4	6.8	26.0
16 hours	Pro	4.3	47.9	21.4	1.1	2.6	15.6	2.7	1.0	0.1	3.2
	Ocp	1.1	1.4	1.9	4.1	11.1	1.5	1.3	9.3	14.4	35.4

**Legend:** Pro. Proportion of vehicles in % (Sum may not add up to 100% due to figure rounding)\*

Ocp. Average occupancy of vehicles including both driver and passengers\*

M&H Medium and Heavy

\* All traffic data are collected from combined bounds